

OFFICIAL GREENWICH

# map & guide

# greenwich

Sponsored by



UNIVERSITY OF  
GREENWICH

**visitgreenwich**  
time after time

[visitgreenwich.org.uk](http://visitgreenwich.org.uk)

#GreenwichTime

**£2**  
WHERE  
SOLD





# All under one iconic roof

30+ bars and restaurants  
60+ designer shopping brands  
Unforgettable leisure experiences

Find us on the Greenwich Peninsula



GAUCHO

iFLY  
INDOOR SKYDIVING



## WELCOME TO ROYAL GREENWICH



Greenwich – a Royal Borough, the home of time and a UNESCO World Heritage Site. A rich blend of historical treasures and contemporary delights. Stand astride the Prime Meridian; take a trip on the river; marvel at the majesty of the Old Royal Naval College; shop for original art and craft at Greenwich Market; discover Woolwich; explore the creativity at Greenwich Peninsula; walk over The O2 and take in a show. Whatever your fancy, you'll have a prime time in Greenwich.



Greenwich : un quartier royal à l'origine du temps universel et classé comme site du patrimoine mondial. Un riche mélange de trésors historiques et de merveilles contemporaines. Enjambez le premier méridien, faites un tour de bateau sur la rivière, émerveillez-vous devant la splendeur du Old Royal Naval College, achetez des créations originales au marché de Greenwich, découvrez Woolwich, marchez sur le toit de The O2 et assistez à un spectacle. Quelles que soient vos envies, vous passerez des moments inoubliables à Greenwich.



Greenwich es uno de los municipios reales de Londres, hogar del famoso meridiano de Greenwich y patrimonio de la humanidad. Cuenta con una rica mezcla de tesoros históricos, así como rícones encantadores y modernos. Coloca un pie a cada lado de la línea del meridiano cero; navega por el Támesis; déjate cautivar por el Old Royal Naval College; compra arte y productos artesanales en el mercado de Greenwich; descubre y explora Woolwich; camina sobre el estadio The O2 y disfruta de uno de sus espectáculos. Hagas lo que hagas, en Greenwich siempre podrás pasarlo bien.



Greenwich – historischer Stadtteil Londons, Wiege der Weltzeit und Weltkulturerbe. Ein Ort voller historischer Sehenswürdigkeiten und zeitgenössischer Attraktionen. Stellen Sie sich direkt über den Nullmeridian, unternehmen Sie eine Bootstour auf der Themse, bewundern Sie das prachtvolle Old Royal Naval College, bummeln Sie über den Greenwich Market und erstehen Sie einzigartiges Kunsthandwerk, erkunden Sie Woolwich, klettern Sie über das Dach The O2 und besuchen Sie eine Veranstaltung. Worauf immer Sie Lust haben – in Greenwich erwartet Sie eine gute Zeit!



格林威治——皇家自治区，是有“时间的故乡”美誉的世界遗产地，拥有丰厚的历史底蕴亦不乏当代情致。在格林威治，您可以体验本初子午线在脚下延伸的奇妙经历，在河上旅行，感受古老的格林威治皇家海军学院的庄严肃穆，逛格林威治市集以购买原创艺术品和手工艺品，领略伍利奇的风采，穿上攀登装备去爬 The O2 体育馆（登高观景）然后入内观看演出——无论您倾心哪项活动，格林威治都会让您乘兴而来，尽兴而归。



# HIGHLIGHTS

Royal Greenwich is bursting with 'must-sees'. Its world renowned maritime and cultural riches combine with extraordinary architecture, royal heritage and gorgeous green spaces to create one of the UK's bucket-list destinations. Explore the Maritime Greenwich World Heritage Site, experience the cool buzz at Greenwich Peninsula and discover the treasures of Woolwich, Eltham and Charlton. Have your best time in Greenwich!



- Place one foot in the west and one in the east at the Prime Meridian line at the **Royal Observatory**.
- Look out over the entire World Heritage Site from its highest point in **Greenwich Park**, London's oldest enclosed Royal Park.
- Plunge into Britain's proud seafaring past at the **National Maritime Museum**.
- Marvel at the magnificent **Painted Hall**, often referred to as the 'UK's Sistine Chapel', at the **Old Royal Naval College**.
- See Elizabeth I's famous 'Armada Portrait' at the historic **Queen's House**.
- Experience seagoing life on the world's only surviving tea clipper, **Cutty Sark**, and book a Cutty Sark Rig Climb for superb London views.
- Shop for an original piece of art and craft at the historic **Greenwich Market**. Meet the makers, feel the hubbub and enjoy the street food.
- Glide down the river to Greenwich Peninsula for a sky-high ride on the **IFS Cloud Cable Car**.
- Climb over the iconic roof of the world's most popular entertainment venue at **Up at The O2**.
- Do more at **The O2** with over 30 bars and restaurants, more than 60 designer shopping brands and unforgettable leisure experiences.
- Catch thought-provoking contemporary art and photography at the free **NOW Gallery**.
- Explore **The Tide**, London's first elevated, riverside linear walkway at Greenwich Peninsula.
- Wander 19 acres of gorgeous gardens at **Eltham Palace and Gardens**, where Tudor history meets Art Deco design.
- Immerse yourself in three centuries of military history at the **Royal Arsenal**, Woolwich.
- Take your seat at a night of live performance at **Woolwich Works** - music, comedy, cabaret, dance and more is all here in a fabulous heritage venue.
- Stand, awestruck, by the mighty engineering marvel of the **Thames Barrier**.
- See Greenwich from the **River Thames**. Relax on board a **riverboat** and drink in the best views of London.

Visit our  
things to  
do page





# WHAT'S ON

Greenwich offers a year-round programme of incredible events and exhibitions. A hub of entertainment since Shakespeare's day, the Royal Borough hosts everything from global pop icons at The O2 to emerging stars at Woolwich Works; major exhibitions at the National Maritime Museum to compelling productions at Greenwich Theatre; and free, inclusive, world-class events at Royal Greenwich Festivals, including the extraordinary outdoor spectacle of Greenwich + Docklands International Festival.



Visit our  
**what's on** page  
to see what's  
coming up



## WOOLWICH WORKS

MUSIC • COMEDY • THEATRE • DANCE  
FILM • WORKSHOPS • TALKS • FESTIVALS  
FOOD • DRINK • FAMILY FRIENDLY  
COMMUNITY • RECORDING STUDIO  
HIRE SPACE & MORE!



## LONDON'S BEST CONNECTED VENUE

[www.woolwich.works](http://www.woolwich.works)   @woolwichworks

The Fireworks Factory, 11 No 1 Street, Royal Arsenal, London SE18 6HD

FROM THE ROYAL BOROUGH OF GREENWICH, FOR EVERYONE.

  
ROYAL borough of  
GREENWICH



# EAT & DRINK

You'll eat and drink like royalty in Greenwich's wonderful pubs and restaurants. Food, wine and coffee from across the globe meet British classics in every corner of the Royal Borough.

Any foodie's tour of the borough naturally begins in Maritime Greenwich, where pubs, wine bars and bistros adorn twisting Georgian streets. Ground zero for Greenwich gastronomy are the street food trucks and stalls of **Greenwich Market**. **1** And Friday to Sunday, April to December, the world-food options increase substantially when the Cutty Sark Street Food Market opens for business.

Just round the corner is **Sticks'n'Sushi**. **2** serving a blend of Japanese tradition, local history and Nordic design. **The Old Brewery** at the Old Royal Naval College features fine ales and modern British food in historic surroundings. For a unique heritage experience, book afternoon tea at the **Cutty Sark Café**. **3** sitting beneath the famous ship's beautiful copper hull. Or take a pit stop at the National Maritime Museum's new **Shake Bar**, offering fantastic views of Greenwich Park.

Riverside pubs are another sure crowd pleaser. The **Trafalgar Tavern**. **4** is an historical Thames-side gem offering a warm welcome amidst a wonderful art collection; **The Oystercatcher** boasts a riverfront terrace and **Enderby House**. **5** offers panoramic views of Canary Wharf from Greenwich Peninsula. Inshore, local favourites like **The Coach and Horses** and **Richard the First** are also certain to satisfy, as is **Davy's Wine Vaults**, perfect for matching modern British dishes with expertly selected wines.

At the tip of Greenwich Peninsula, there's an entire street of incredible restaurants all under one roof at **The O2**. Next door, in London's Design District, experience world street food at **Canteen Food Hall & Bar**. **6** or sample contemporary seasonal dishes at **Bureau Restaurant**. For exquisite Indian fine-dining, head to **Kinaara**. **7** at the InterContinental London – The O2.

Further downriver, Woolwich is rich with exciting world-food options. Try **ViB Bar's** bao and Vietnamese treats, or the flapping-fresh fish of **Hitachi Sushi**.



1



2



3



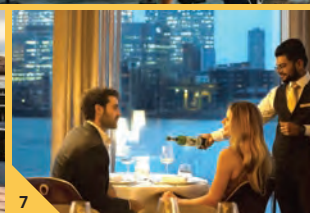
4



6



5



7

Visit our **food and drink** page for more tasty options



ROYAL  
MUSEUMS  
GREENWICH

[rmg.co.uk](http://rmg.co.uk)

Best value  
with our  
Day Pass

## Visit the Royal Observatory

Stand on the world-famous  
Meridian Line at the home of  
Greenwich Mean Time (GMT)

Royal Museums Greenwich

Royal Observatory | Cutty Sark | National Maritime Museum | The Queen's House

Greenwich Pier Greenwich (only 8 mins from London Bridge)



# SHOPPING

Greenwich offers superb shopping, from fresh produce and handmade art to souvenirs and brand-name discounts. You'll find treasures scattered throughout the Royal Borough, including the neighbourhoods of Charlton, Eltham, Blackheath and Woolwich, where high streets and markets brim with local character and community spirit.

**Greenwich Market**, a Royal Charter market trading since 1737, is a perfect place to begin. Shoppers will find locally made arts and crafts jostling for attention alongside fresh produce, vintage clothing, upcycled crafts, antiques and global street food beneath its handsome steel and-glass canopy.

There's plenty more fresh produce to pluck at local markets like **Royal Arsenal Farmers' Market**, held in Woolwich on the second and last Saturday of every month. More farmers' markets pop up in Blackheath every Sunday and Eltham on the third Saturday of each month. While you're there, potter around the independent shops of pretty Blackheath village and the well-stocked high street stores of Woolwich and Eltham.

Retro lovers will be in clover amongst the eclectic stalls of **Greenwich Vintage Market**, open Friday to Sunday every week. The eagle-eyed will find plenty of gems amongst the bric-a-brac and old-world ephemera and can celebrate their

swags with a cone from the vintage ice cream cart.

For something unique to the Royal Borough, you can't go past **Made in Greenwich**, a colourful cooperative teeming with the work of local artists, craftspeople and food entrepreneurs.

Hunting for global clothing and lifestyle brands? **Outlet Shopping at The O2** offers irresistible discounts on over 60 well-known labels at up to 70% off RRP.

Eyes open for a souvenir of Greenwich's historic riches? The on-site shops at the **Old Royal Naval College**, **Royal Observatory**, **National Maritime Museum** and **Cutty Sark** are packed with books, clothing, stationery and mementoes.



Visit our  
shopping  
page for  
inspiration



**GREENWICH  
MARKET**  
LONDON  
Est. 1737



## LOCAL DESIGNERS & MAKERS

## ANTIQUES AND COLLECTABLES

## INTERNATIONAL STREET FOOD



EXPLORE OUR EVENTS



GREENWICHMARKET.LONDON  
@GREENWICHMARKET

OPEN DAILY  
10AM - 5.30PM





## A UNIVERSITY FOR ALL

The University of Greenwich has a stunning setting in the heart of a UNESCO World Heritage Site, but it is much more than a pretty face. For over 130 years Greenwich has been providing high-quality education to its students, who come from many walks of life. It's a place with no limits on where students come from and what they can do next. Academic and support staff help students to achieve their ambitions because of, not despite, their background.

With almost 27,000 students from over 140 countries, Greenwich has a diverse, supportive community and new students soon feel at home, whether they come from around the corner or the other side of the world.

Greenwich also transforms the lives of people near and far. Outreach programmes with local schools and colleges raise awareness of opportunities in higher education among under-privileged groups while Natural Resources Institute's world-leading research and teaching supports food security and sustainable development across the globe.

Ranked number three London university for sustainability in the Times Higher Education Impact Rankings 2025, Greenwich has 260 solar panels installed across its three campuses and over 40 courses with sustainability content. It's a university that cares about the future of our planet as much as it does about the future of its students. Learn more at [gre.ac.uk](https://gre.ac.uk).



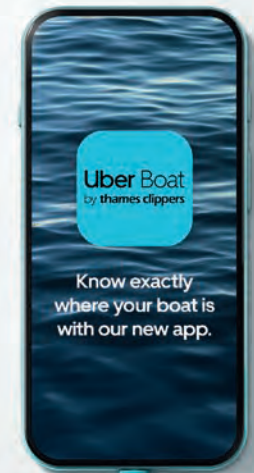
Check  
online  
for  
more



UNIVERSITY OF  
GREENWICH



Your captain is Ellie.  
She's 2 mins away.  
And she's bringing your coffee.  
How refreshing.



Download now for tickets,  
tracking and journey planning.



# GREENWICH TOWN CENTRE

## MARITIME GREENWICH WORLD HERITAGE SITE



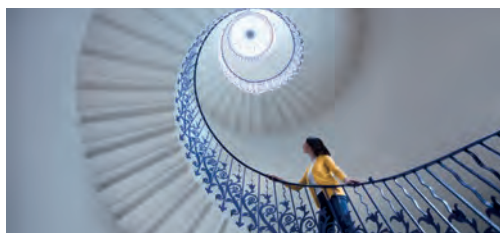
### 1 Royal Observatory, Greenwich

Christopher Wren's Royal Observatory is a Greenwich 'must see'. Founded in 1675, it's the site of the Prime Meridian – straddle the line in the courtyard to place a foot in each hemisphere! Built by order of Charles II, the Observatory has played a peerless role in the history of astronomy and navigation. The Greenwich Time Ball drops each day at precisely 1pm, as it has since 1833.



### 2 National Maritime Museum

Britain's mighty maritime past is preserved in the National Maritime Museum's outstanding collection. With over two million artefacts in its care – from the coat Admiral Nelson wore when fatally wounded to relics of the *Titanic* to the fine paintings on show, such as George Stubbs's 'Kangaroo' and 'Dingo' paintings – its galleries are packed with epic stories of exploration and endeavour.



### 3 The Queen's House

Inigo Jones-designed Queen's House is justly famous as Britain's first classical building. Built by James I between 1616 and 1635 as a gift to Queen Anne, it's as notable for architectural highlights like the Tulip Stairs, Britain's first self-supporting spiral staircase, as its art. The internationally renowned collection features works by Turner, Hogarth and Reynolds.



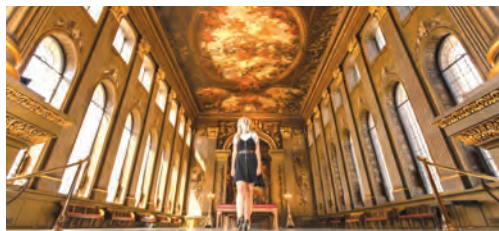
### 4 Cutty Sark

*Cutty Sark* is an icon of Royal Greenwich. Once the fastest ship in the world, it's the last tea clipper in existence. Immersing visitors in the sights, sounds and smells of life on board, it is also possible to touch the copper hull, take the helm and even venture up high at the exciting Rig Climb Experience.



### 5 Old Royal Naval College

Built on the site of Greenwich Palace, birthplace of Henry VIII, the Old Royal Naval College is a majestic 17-acre estate open for all to enjoy. Home to the Painted Hall, Chapel and Victorian Skittle Alley, the site is also one of the world's most popular film locations. The University of Greenwich and Trinity Laban have campuses here.



### 6 The Painted Hall

The Painted Hall is the resplendent jewel in the Old Royal Naval College's crown. Designed in the early 18th century by Sir James Thornhill, it took 19 years to complete and is a glorious tribute to Britain's monarchy and naval power. Visit the adjoining Nelson Room and see where Lord Nelson lay in state following his death at the Battle of Trafalgar.



### 15 The Fan Museum

The Fan Museum is the only one of its kind in the country. Dedicated to the history of fans and the art of fan-making, it boasts a rich collection of fans from around the world, the earliest dating to the 12th century. Located within a pair of beautifully restored Georgian townhouses opposite Greenwich Theatre, the museum holds regular themed exhibitions which complement the permanent displays.



### 16 Ranger's House

Ranger's House is an elegant Georgian villa at the south of Greenwich Park, home to the Wernher Collection, a world-class art collection amassed by the 19th-century businessman, Sir Julius Wernher. Also well known as the facade of the *Bridgerton* family residence in the Netflix drama, it boasts over 700 works of art, including Dutch Old Masters and Madonna della Melagrana, from Boticelli's workshop.



### 17 Greenwich Market

Greenwich Market was founded by Royal Decree in 1700 and is London's only historic market within a World Heritage Site. Surrounded by handsome Georgian shops, the covered market is brimming with arts and crafts by local designer-makers, antiques and collectables and delicious street food from across the globe.



### 18 St Alfege Church

Dedicated to Alfege, the Archbishop of Canterbury martyred here by the Vikings in 1012, there's been a church on this site for over 1,000 years. The present church was designed by Nicholas Hawksmoor, and historical figures including Henry VIII are closely connected to the church. Tours of the crypt are a recommended highlight.




### Greenwich Park

Sitting at the heart of the World Heritage Site, this idyllic park is the oldest enclosed Royal Park and home to the Royal Observatory and Prime Meridian line. Stroll tree-lined avenues, see fallow deer in The Wilderness, and relax in the Flower, Herb and Rose Gardens. At the top of the hill, there are fantastic views over the river Thames and the capital.

### 7 Tourist Information

- Tickets
- Maps and guides
- Bureau de change
- Left luggage facility and more

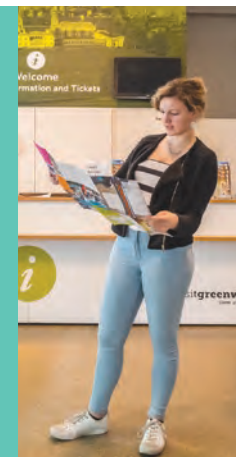
 [tic@visitgreenwich.org.uk](mailto:tic@visitgreenwich.org.uk)

 020 8305 5235

Open daily, 10am – 4pm



Visit our website for information & inspiration





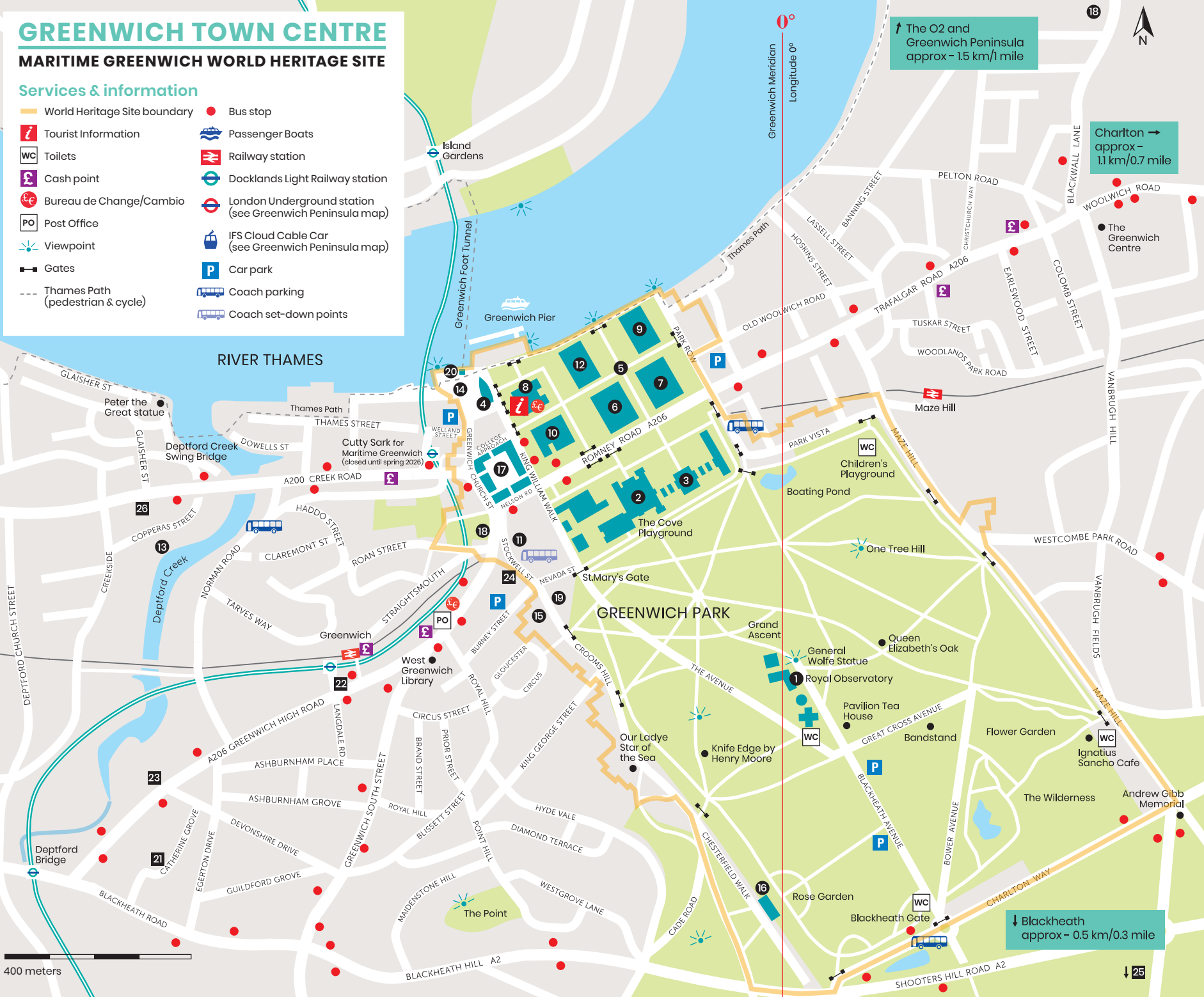
# GREENWICH TOWN CENTRE

## MARITIME GREENWICH WORLD HERITAGE SITE

### Services & information

- World Heritage Site boundary
- Tourist Information
- Toilets
- Cash point
- Bureau de Change/Cambio
- Post Office
- Viewpoint
- Gates
- Thames Path (pedestrian & cycle)
- Bus stop
- Passenger Boats
- Railway station
- Docklands Light Railway station
- London Underground station (see Greenwich Peninsula map)
- IFS Cloud Cable Car (see Greenwich Peninsula map)
- Car park
- Coach parking
- Coach set-down points

### RIVER THAMES



### Attractions & places of interest

#### Royal Museums Greenwich:

- 1 Royal Observatory
- 2 National Maritime Museum
- 3 Queen's House
- 4 Cutty Sark
- 5 Old Royal Naval College:
- 6 The Painted Hall
- 7 The Chapel
- 8 Discover Greenwich Visitor Centre

#### University of Greenwich:

- 9 Queen Anne Court
- 10 Dreadnought Building
- 11 Stockwell Street Building & Stephen Lawrence Gallery

#### Trinity Laban:

- 12 Faculty of Music
- 13 Faculty of Dance

- 14 Cutty Sark Gardens

- 15 The Fan Museum

- 16 Ranger's House - The Wernher Collection (open summer only)

- 17 Greenwich Market

- 18 St Alfege Church

- 19 Greenwich Theatre

- 20 Greenwich Foot Tunnel

### Accommodation

- 21 DoubleTree by Hilton London Greenwich
- 22 Novotel London Greenwich
- 23 Staycity Aparthotels Greenwich High Road
- 24 Ibis London Greenwich
- 25 The Clarendon Hotel
- 26 Zedwell Greenwich

Visit our  
**accommodation**  
page for more  
places to stay



↑ The O2 and  
Greenwich Peninsula  
approx - 1.5 km/1 mile

Charlton →  
approx -  
1.1 km/0.7 mile

↓ Blackheath  
approx - 0.5 km/0.3 mile



# GREENWICH PENINSULA

Nowhere embodies the bustling growth of the Royal Borough like Greenwich Peninsula. Crowned by The O2, it's a thriving centre of creativity, culture and entertainment. From large-scale festivals to cultural installations and seasonal activities, there's always something to discover.

While events, nightlife and galleries are the main draw to the Peninsula, it's also a renowned shopping location. After riding high over the Thames on the IFS Cloud Cable Car or scaling the world-famous roof of The O2 with Up at The O2, head inside to shop big brands at up to 70% off RRP at Outlet Shopping at The O2.

A mere eight minutes away from the Maritime Greenwich World Heritage Site by Uber Boat by Thames Clippers, it's also easy to get to by tube, bus, or a walk or cycle on the Thames Path.



Check  
online for  
more

## Attractions & places of interest

- 1 The O2
- 2 Up at The O2
- 3 Outlet Shopping at The O2
- 4 Design District
- 5 The Tide
- 6 IFS Cloud Cable Car and London Cable Car Experience
- 7 Ravensbourne University London
- 8 Greenwich Peninsula Golf Driving Range & CrazyPutt Adventure Golf
- 9 NOW Gallery
- 10 Greenwich Peninsula Ecology Park
- 11 The Line art trail
- 12 Central Park

## Accommodation

- 13 The Pilot
- 14 InterContinental London – The O2



### 1 The O2

The O2 is the world's most popular, music, leisure and entertainment venue. A full day-out destination, there's plenty to explore with over 30 bars and restaurants, outlet shopping, movies and bowling to indoor skydiving, trampolining, immersive sports bars and more.



### 2 Up at The O2

Book an exhilarating climb over The O2 and soak in spectacular 360° views of Greenwich, the Thames and London. Up at The O2 takes climbers over the roof of the iconic entertainment venue. Choose from Daytime, Sunset, Twilight and Celebration Climbs.



### 5 The Tide

The Tide is London's first elevated, linear riverside walkway. Running from Peninsula Square to the banks of the River Thames, it's studded with public art by luminaries such as Damien Hirst, and stages wonderful temporary exhibits.



### 6 IFS Cloud Cable Car

The IFS Cloud Cable Car is a sensational way to cross the River Thames. Linking Greenwich Peninsula with the Royal Docks, it offers superb views over the capital and the breathtaking new Glass Floor Experience. Visit the London Cable Car Experience, an exciting hub of fun for all the family.



### 3 Outlet Shopping at The O2

Shopping for discounts on the big brands? Outlet Shopping at The O2 offers irresistible discounts at up to 70% off RRP on over 60 brands including Adidas, Clarins, Tommy Hilfiger, Nike and more. All under the iconic roof of The O2.



### 4 Design District

Greenwich Peninsula's Design District oozes creativity. Spread over 16 innovative buildings (the work of eight separate architects) it includes multiple event spaces and even a bookable rooftop basketball court. Refuel at Canteen Food Hall & Bar, with world food and cocktails, or dine in the light-filled Bureau Restaurant.



### 8 Greenwich Peninsula Golf Driving Range

London's premier driving range lies on the west side of the Peninsula, allowing splendid views over the river to the glass city of Canary Wharf beyond. With 60 state-of-the-art bays over two tiers, there is also The Joint restaurant, a golf shop and CrazyPutt Adventure Golf.



### 9 NOW Gallery

Fans of cutting edge contemporary art, fashion and design will love NOW Gallery. Free to visit, NOW hosts a number of forward thinking artist projects per year in its striking gallery building and the surrounding area. There's also live art, music and performance within a revolving line-up of events.



# SET JETTING

## FILM AND TV LOCATIONS IN GREENWICH

Greenwich is one of the UK's greatest places for 'set jetting' – visiting locations where so many iconic and beloved movies and TV shows were filmed.

Travel by river on board **City Cruises** and step on to a movie set. From the photogenic glories of the **Maritime Greenwich World Heritage Site** to the cinematic backdrops of **Charlton, Woolwich, Thamesmead** and **Greenwich Peninsula**, there's not a corner of this amazing borough that hasn't had its moment on screen.



Old Royal Naval College

This year, Greenwich celebrates 100 years of filming at the **Old Royal Naval College**, which is heralded as the UK's most filmed heritage location with over 200 productions.

Blockbuster titles include *Napoleon*; *Cruella*; *Thor: The Dark World*; *Pirates of the Caribbean: On Stranger Tides*; *The Crown*; *Slow Horses*; and a couple of Bonds to boot!

Bridgerton fans will recognise the **Ranger's House**, the face of the iconic *Bridgerton*



Ranger's House

family home. The **Old Royal Naval College**, **Queen's House** and **Greenwich Park** are also regular stars. Close by is **Greenwich Market**, which provided magical scenes in *Now You See Me 2*.



Queen's House

Create your river adventure on an **Uber Boat** by **Thames Clippers**. At **Greenwich Peninsula**, take a flight on the **IFS Cloud Cable Car** for a spy's eye view of where *James Bond* found himself on top of **The O2** in *The World is Not Enough*.



The O2

In the south of the borough is the beautiful **Eltham Palace and Gardens** which has played various roles in *The Crown* and also featured in movies *Stan & Ollie* and *Wonka*.

Whether you're a lover of rom-com, a fanatic for superheroes or on the hunt for action packed adventure, you'll find it all in Greenwich, the ultimate film set.

# GREENWICH

"AN UNMISSABLE TIME"

★★★★★

STARRING

visitgreenwich & citycruises



with support from



OLD ROYAL  
NAVAL COLLEGE  
GREENWICH



ROYAL  
MUSEUMS  
GREENWICH



Maritime Greenwich  
UNESCO WORLD HERITAGE SITE

GREENWICH  
MARKET  
LONDON  
EST. 1737



Uber Boat  
by thames clippers



UNIVERSITY OF  
GREENWICH



## SetJetters

FIND FILM LOCATIONS IN GREENWICH...  
LONDON... AND BEYOND!

You can now visit the exact spots seen in TV shows and films. Using the SetJetters app recreate the moment for yourself! Earn badges and uncover filming locations near you!



Download the app for free on both the Apple & Android app stores

BROUGHT TO YOU BY

Uber Boat  
by thames clippers



# AROUND AND ABOUT

Discover more highlights and wonderful hidden gems right across the Royal Borough of Greenwich. Make the most of your visit and take time to explore the remarkable attractions in Woolwich, Eltham and Charlton, as well as all the beautiful parks and open spaces that put the 'green' in Greenwich.

Take **Severndroog Castle** <sup>1</sup> an 18th-century folly on Shooter's Hill offering unexpected views over seven counties from one of London's highest points. Visit on Sundays to climb its viewing platform, or any day to ramble in the surrounding woods. The Tearoom is open Thursday to Sunday.

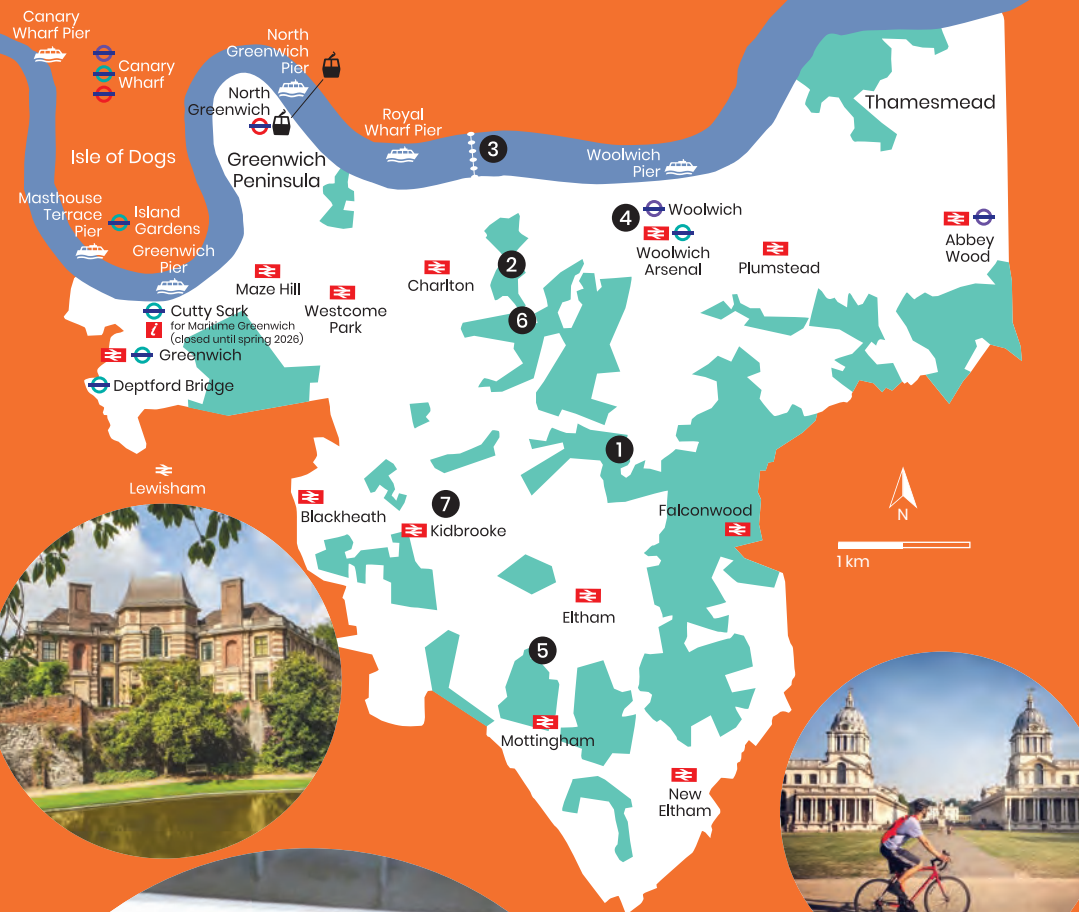
Animal lovers should head to Charlton in the borough's east for **Maryon Wilson Animal Park**, <sup>2</sup> a refuge and petting zoo set in the remnants of the ancient forest of Hanging Wood. Those more drawn to modern engineering marvels will be in awe of the gleaming silver domes of the mighty **Thames Barrier**, <sup>3</sup> one of the world's largest movable flood barriers.

Greenwich's architecture is one of its most popular attractions. From the 21 listed military and industrial buildings in the **Royal Arsenal** <sup>4</sup> at Woolwich to the mixed Tudor and Art Deco delights of **Eltham Palace**, <sup>5</sup> there are so many prime examples of British building to see. **Charlton House** <sup>6</sup> is one of the finest Jacobean mansions in the country, while **Crossness Pumping Station**, the 'cathedral in the marshes' is a stunning example of Victorian industrial architecture.

The river is Greenwich's highway and lifeblood. With over 8.5 miles of Thames Path and three piers in the borough, it's the ideal way to get off the beaten track and explore by foot, bike or boat. The views on and off the river are stunning.

Beyond the water, the borough offers acres of delightful parks and open spaces, including **Blackheath**, **Woolwich Common**, **Charlton Park**, **Well Hall Pleasaunce**, the ancient trees of **Oxleas Woods** and miles of green walking routes including the Capital Ring and Green Chain Walk.

Other lesser-known delights include pre-booked tours of the **Prince Philip Maritime Collections Centre**, <sup>7</sup> home to the Royal Museums Greenwich stored collections, and **Lesnes Abbey Woods**, where you can wander the Grade II listed ruins of a medieval abbey.





# WOOLWICH

Woolwich is the Borough's freshest cultural destination, easily reached by train, DLR, the Elizabeth Line and Uber Boat by Thames Clippers. Exciting new developments and events blend creatively with Woolwich's rich legacy of industrial, military and maritime history. Explore the town and riverside to discover the Royal Arsenal, the high street and popular markets, pubs and restaurants.



## Royal Arsenal

The Royal Arsenal offers military history alongside thrilling culture. Its grand historic buildings house Woolwich Works, Punchdrunk, pubs, cafes and new homes. Look out for the Royal Brass Foundry and the Old Royal Military Academy.



## 8 Elizabeth Line

The Elizabeth line provides a speedy and spacious way to travel to Woolwich. The largest project of its kind in Europe, the gleaming new line was opened by Elizabeth II, just before her Platinum Jubilee.



## 14 St George's Garrison Church

The ruins of St George's Garrison Church impresses with its modern canopy roof and beautiful mosaics. Still a functioning church, it hosts special events and can be visited for evensong and Sunday Mass.



## 2 Woolwich Works

Voted by *Time Out* as Best New Culture Spot in London, Woolwich Works packs large-scale performance and event spaces, studios, a bar and cafe into five beautifully restored heritage buildings. Comedy, cabaret, music, dance and so much more!



## 12 Tramshed

Based in a former generating station for the tram network, Tramshed is a theatre company and arts hub offering performing arts programmes for young people and adults with learning differences.



## 15 Royal Artillery Barracks

Sitting on Woolwich Common, the Barracks was the home of the Royal Artillery from 1776 until 2007. The impressive Georgian façade of the Barracks is said to be the longest of its kind in Europe.

## Attractions and places of interest

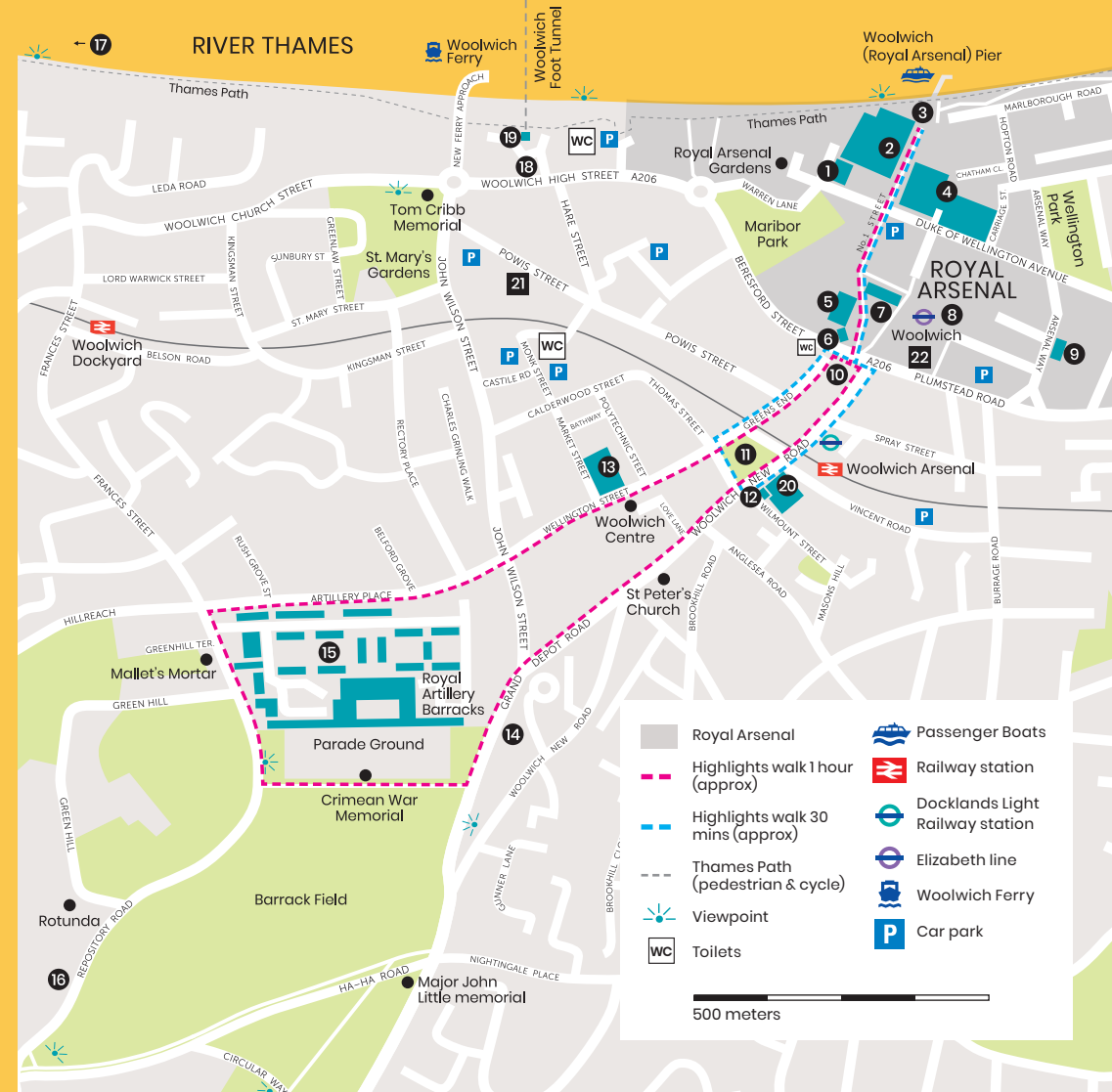
- 1 Old Royal Military Academy
- 2 Woolwich Works
- 3 Assembly by Peter Burke
- 4 Punchdrunk
- 5 Royal Brass Foundry
- 6 The Guard House and Nike Statue
- 7 Dial Arch
- 8 Elizabeth Line
- 9 The Shell Foundry
- 10 Beresford Square
- 11 General Gordon Square and John Pattison Memorial
- 12 Tramshed
- 13 Woolwich Town Hall
- 14 St George's Garrison Church
- 15 Royal Artillery Barracks
- 16 The King's Troop, Royal Horse Artillery
- 17 Thames Barrier
- 18 The Waterfront Leisure Centre
- 19 Woolwich Foot Tunnel
- 20 Woolwich Waves (opens autumn 2025)
- 21 Travelodge London Woolwich
- 22 Premier Inn London Woolwich (Royal Arsenal)

## Accommodation

- 21 Travelodge London Woolwich
- 22 Premier Inn London Woolwich (Royal Arsenal)



Check online for more





# ELTHAM

Head to the south of the Royal Borough and lose yourself amongst Eltham's tranquil parks and gardens. Fans of Tudor and Art Deco architecture will love Eltham Palace and Gardens. Once home to Henry VIII, it was later the mansion home for 1930s high society. And if you're looking for up-and-coming spots to go out, Eltham's night-time scene is going from strength to strength.

Medieval, Tudor and Art Deco design mingle in **Eltham Palace and Gardens**, <sup>1</sup> the childhood home of Henry VIII and subsequent playground of millionaires and filmmakers. In the 1930s, Stephen and Virginia Courtauld built their Art Deco home around the original medieval Great Hall. Nineteen acres of manicured gardens feature stunning herbaceous borders, pools and cascades running down to the picturesque moat. A packed calendar of year-round events brings visitors back again and again. It's especially popular with families with its inspiring wooden playground and gorgeous historic Orchid House Café.

The Green Flag Award-winning **Well Hall Pleasaunce** offers you a delightful mix of formal gardens, ponds and woodland. <sup>2</sup> Children's writer E. (Edith) Nesbit, the celebrated author of *The Railway Children*, lived in Well Hall here from 1899 to 1920, during which it was a lively hub for young writers, artists and members of the Fabian Society. Within in Eltham's **Avery Hill Park**, the Victorian-era **Winter Garden** <sup>3</sup> houses a cornucopia of exotic plants in its striking domed glasshouse, reminiscent of the world-famous greenhouses at Kew Gardens, but without the admission fee!

Check online for more



You'll find another Royal Greenwich Green Flag award-winning site, **The Tarn**, <sup>4</sup> nearby. The Tarn's landscaped gardens centre around a tranquil lake, where you'll spot a host of different waterbirds – just minutes from Eltham town centre. And the stunning Grade I-listed **Eltham Lodge**, renowned as one of the most elegant historic homes in London, retains many of its 17th-century features. Today it's home to **Royal Blackheath Golf Club**, <sup>5</sup> one of the oldest golf clubs in the world.

Eltham is not just a great place to visit for its history and green spaces, its food and drinks scene, shopping on Eltham High Street and **Eltham Producers' Market**, and night-time entertainment options, are also a huge draw.

Just a short stroll from Eltham train station is an incredible 16th century estate, **Tudor Barn**. <sup>6</sup> This Instagram-worthy venue does a classic English afternoon tea, Sunday roasts and modern gastropub-style fare. If you're after a Sunday roast, a night out, or a catch-up with friends, head to **Eltham GPO, Legends American Grill & Bar** or **The Rusty Bucket Pub**.

For date night inspiration, grab tickets to the latest film to screen at the **Vue Cinema Eltham** <sup>7</sup> and then book a table for a pre- or post-movie bite to eat at **Sky Bar** <sup>8</sup> upstairs – where you can kick on into the night with DJs, fine wines, fresh cocktails and more. Theatre-lovers should check out the schedule at **Bob Hope Theatre**, named after the much-loved comedian who maintained a lifelong love of his childhood home in Eltham.





# CHARLTON

Originally a tiny Tudor village, Charlton is home to a Jacobean mansion, a historic football team, woodlands, parks, an engineering marvel and, more recently, an unexpected Banksy that appeared overnight.

Begin your tour with a visit to **Charlton House & Gardens**. ① Dating from the early 17th century, this standout historic site includes a summer house attributed to architect Inigo Jones of Somerset House fame. As well as traditional Afternoon Tea at **Frilly's Tea Room**, Charlton House & Gardens also host a year-round calendar of special events.

Acres of delightful grounds, including a **Peace Garden** ② and **Charlton Park**, surround the house and beyond the tree-lined paths you'll find the characterful **Old Cottage Coffee Shop**. There are also more wide open spaces at **Hornfair Park**, as well as the Art Deco-era **Charlton Lido** ③ to cool off in. If it's a more secluded landscape you crave, head to **Maryon and Maryon Wilson Animal Park** ④ provides sanctuary to ponies, goats, sheep, pigs and cute little furies including chinchillas.

Perhaps the most famous London landmark in Charlton, the **Thames Barrier** ⑤ is a gleaming feat of engineering protecting Londoners from the Thames' tidal surges. Head to the river to see it in person. Meanwhile, tucked away in residential streets is **The Valley**. ⑥ Home to Charlton Athletic FC for more than 100 years, it's one of London's most iconic football venues.

Charlton Riverside's **Thames-Side Studios** is the UK's largest site of artist and maker spaces, hosting a vibrant programme of public exhibitions from local and visiting artists. When inspiration takes hold, **The Rivershop** invites you to join hands-on workshops from carpentry to resin art, while next door, **Art Hub Studios** is buzzing with artists and offers a range of creative courses.



①



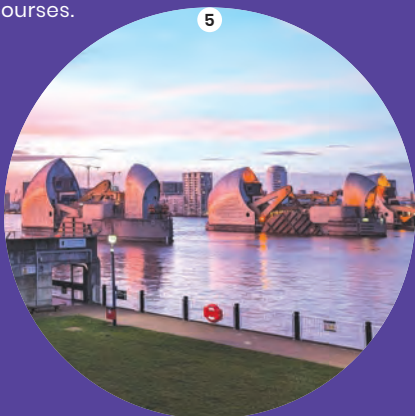
②



③



④



⑤



⑥

## Charlton House & Gardens

### A hidden gem in Royal Greenwich

Step into over 400 years of history at one of London's best-preserved Jacobean manor houses. Explore grand historic interiors, wander tranquil walled gardens, and enjoy exhibitions, tours, seasonal events, and a cosy café – all just minutes from Greenwich and Charlton Station.

- Beautiful gardens & sensory spaces
- Café, events & heritage exhibitions
- Interactive educational sessions
- Family friendly & accessible
- Venue hire for weddings, celebrations & wakes, corporate events and more

FREE  
admission



Check  
online for  
more



📍 Charlton Road, SE7 8RE | Open Daily

🌐 [greenwichheritage.org](https://greenwichheritage.org)

📷 @charltonhousegreenwich

Explore our events







# GETTING AROUND

Getting to and travelling around the Royal Borough of Greenwich couldn't be easier or more pleasant – from river boats and gondolas in the sky to train, tube and bus.



Forever tied to the Thames, Greenwich begs to be explored by boat. Convenient and enthralling, the river offers wonderful views of historic sights in the Borough and London beyond.

## Uber Boat by Thames Clippers

The River Bus connects 24 piers across London, including three in the Royal Borough of Greenwich. With an onboard café bar and regular services, it's a great way to travel by river.

From Greenwich Pier, you can reach:

North Greenwich **8 mins**  
Woolwich (Royal Arsenal) **20 mins**  
Central London **23 mins**

## City Cruises

Sightseeing cruises depart from Greenwich to Westminster **every 40 mins**.

## Thames River Sightseeing

Sightseeing cruises depart from Greenwich to Westminster **every 30–40 mins**.



**Southeastern** and **Thameslink** trains run every 10 minutes from London Bridge to Greenwich, Charlton, Eltham and Woolwich.

Cannon Street **15 mins**, Charlton **7 mins**  
London Bridge **8 mins**, Woolwich Arsenal **13 mins**

Please check [nationalrail.co.uk](http://nationalrail.co.uk) before you travel.



The **IFS Cloud Cable Car** spans the river Thames between Greenwich Peninsula and the Royal Docks. Connecting with the Docklands Light Railway and the London Underground, it runs seven days a week. Its roomy cabins are accessible for wheelchair users, pushchairs and cyclists (two bicycles per car).



The bus network covers the entire Royal Borough and is particularly useful for Eltham, Charlton and Woolwich. For more information go to [tfl.gov.uk](http://tfl.gov.uk).



A number of official walking routes pass through the borough, including Capital Ring, Green Chain Walk, Thames Path and the Jubilee Greenway.

For more travel info visit TfL



London's new **Elizabeth line** makes it even easier to get to the Royal Borough. Its gleaming, state-of-the-art trains link stations at Woolwich and Abbey Wood with Liverpool Street, Paddington and other stations in central London, and also Heathrow. Runs every 5 minutes.

Paddington to Woolwich **25 mins**  
Canary Wharf to Woolwich **7 mins**

For Greenwich Peninsula, travel on the **Jubilee line** to North Greenwich.

London Bridge **9 mins**, Westminster **14 mins**

The **Docklands Light Railway** runs driverless above-ground services connecting with the London Underground.

Bank or Tower Gateway to Greenwich station **22 mins**

In the Borough, DLR trains run from Greenwich station to:

North Greenwich (for Greenwich Peninsula) via the Jubilee Line at Canary Wharf **15 mins**  
Woolwich Arsenal **27 mins**  
Please check [tfl.gov.uk](http://tfl.gov.uk) before you travel.



Royal Greenwich is a great place to cycle around with plenty of routes to try. The Thames Path provides a scenic traffic-free cycling route for the majority of the length of the Thames throughout the borough. Please see [royalgreenwich.gov.uk/cycling](http://royalgreenwich.gov.uk/cycling)

**Photography:** Allen Jones; Amanda Batista; Anna Rynkowska; Aron Klein; Danny Kaan; English Heritage; Fit Creative; Fred Barrington; Greenwich Market; InterContinental London - The O2; Luke Dyson; Macky Mann; Maël Moreau; Michael Shaw; National Maritime Museum, Greenwich, London; Paul Sanders; PAYE Ltd; RBG/David Madden; Royal Greenwich Heritage Trust; Ryanna Allen; Severndroog Castle; Stephen Swain; Taran Wilkhu; The Royal Parks; Visit Greenwich

**Design:** fitcreative.ltd.uk

Content correct at time of publication. Check online for latest information.

This leaflet has been produced using carbon balanced paper certified by the World Land Trust.



**CARBON  
BALANCED  
PAPER**

[www.carbonbalancedpaper.com](http://www.carbonbalancedpaper.com)  
CBP031766

# Climb up and over The O<sub>2</sub>

A 90-minute outdoor adventure over London's most iconic roof.

Visit [upattheo2.co.uk](http://upattheo2.co.uk)



Book now to save up to 30% on the IFS Cloud Cable Car



Search London Cable Car



Peak and off-peak discounts vary. Maximum 30% discount only available for off-peak round trips when you book seven days in advance. Excludes event tickets. See TfL website for full terms and conditions.

MAYOR OF LONDON





citycruises 

# MORE THAN JUST A CRUISE.

IT'S A **BOATLOAD** OF FUN!

Sightseeing & dining cruises departing daily

Book at [citycruises.com/London](http://citycruises.com/London)



 citycruisesuk

**citycruisesuk** Best views ever!  
(the company is not too bad either)

**citycruisesuk** Big views, little feet 🐾  
#FamilyInGreenwich

**citycruisesuk** views, friends, coffee...  
and my phone on #donotdisturb

 citycruisesuk

**citycruisesuk** Field trip, but make it fun!  
#GreenwichFamilyFun

Find us at Westminster, London Eye, Tower and Greenwich Piers